

The Netherlands Climate Assistance Programme

Workplan Tanzania -edited summary

November 2004

Counterpart:

The Centre for Energy, Environment Science and Technology (CEEST Foundation),
P. O. Box 5511 Dar es Salaam, TANZANIA

Under auspices of the Vice President's Office (Division of Environment)

Project Summary

The project aimed at making analyses of technical and policy options for adaptation to consequences of climate change (adaptation policy) in Tanzania, the case study of Rufiji area. This project is looking into the heavy reliance on agriculture, which is mainly rain-fed, which makes the economy of Tanzania vulnerable to climate change. Then the vulnerability and adaptation assessment will be carried out in horizontal approach, which will integrate other factors in the analysis (like food security, rural water supply, poverty, gender and health). The NCCSAP will try to be policy prescriptive in order to address these issues in an integrated way.

Tanzania finalized a new rural development strategy (RDS) recently. The RDS addresses four challenges namely, promoting widely shared growth, increasing access to services, good governance and the most related to the present study, reducing risks and vulnerability, which will increase the likelihood of timely and effective implementation of the PRSP, including those aspects that can be highlighted as bearing direct or indirectly on adaptation to climate change adaptation which NCCSAP sought to address.

The proposed NCCSAP studies also fit very well within Tanzania's National Water Strategy, PSRP, Agriculture Development strategy, Malaria Strategy and National Environment Plan. This means that health, rural water supply, food security, and gender, will be appropriate and policy relevant focuses of the NCCSAP studies in Tanzania. A consensus on NCCSAP formulation in Tanzania has merged for a focus on studies of a cluster of issues that would complement the on-going NAPA and provide highly relevant policy data. These issues are rural water supply/ health/ gender/ food security/ climate change adaptation.

Both NAPA and the proposed NCCSAP identify gaps in the existing, prior studies of climate change in Tanzania. Among them coverage of diseases other than malaria; and contamination of water; coverage of other crops besides maize, cotton, and coffee. The NAPA states that "Adaptation measures for the poor have not been dealt with exhaustively in Tanzania, and will be tackled in the preparation of the proposed NAPA." However, in addition to these three gaps, the proposed NCCSAP studies will investigate in a holistic and integrated manner how households, and especially rural women, already adapt to climatic extremes. Also what likely obstacles stand in the way of their adopting some of the existing, low cost, technically uncomplicated adaptations available already. Such a "bottom up" and livelihood based

approach will compliment the “top down” approach of the NAPA. The two approaches will enrich each other.

Both the NAPA and the proposed NCCSAP studies emphasize public discussion and debate of the results as part of the policy process in Tanzania. Both will use vernacular Kiswahili as part of this process and attempt to utilize mass media such as newspapers, radio, and TV.

Approach/Methodologies/Tools

The Project consider following principles suggested in UNDP - GEF (Adaptation Policy Framework 2003) as central:

- Adaptation to short-term climate variability and extreme events as a basis for reducing vulnerability to longer-term climate change;
- Adaptation policy and measures assessed in a developmental context
- Adaptation occurs at different levels in society, including the local level;
- The adaptation strategy and the process by which it is implemented are equally important

In addition the approach presented suggest one methodological principle:

- The assessment of current vulnerability and the perception of this run paralell to the assessment of adaptive capacity and therefore to the visualization and design of adaptive options from the beginning;

The project will principally use a combination of a vulnerability and adaptive capacity approach to include some local understanding and knowledge on adaptation into the assessment. Those conceptual framework are well documented in the current discussion (Scientific literature, IPCC, APF).

As described in the project summary the project will contribute to the understanding of the outstanding issues of climate change adaptation of Rufiji District in Tanzania. The principal focus of the project are food security, rural water supply and human health in the context of human livelihoods and human vulnerability and adaptation. Food systems in Rufiji and Tanzania at large are particular vulnerable to climate change and variability due to dependence on rainfed agriculture, low technological level, land property and size and the low level of economic diversification in rural areas which reflect high level of undernutrition in mother and children and high levels of children mortality. Climate change is presumably modifying human health conditions in the area, showing the emergence of vector borne diseases, in particular malaria and cholera diseases incidence.

Although the principal focus of the project are human livelihoods, Rufiji areas are suffering the consequences of water constraints during drought season and flood during rainy seasons, and therefore rural water supply will be one of the major focus of the project in particular in the area where drastic changes in local hydrology are expected, due to climate change and environmental damage.

In this context the project will use a combination of quantitative and qualitative methodologies like structured questionnaires with the assistance of Sustainable Livelihood Framework approach and stakeholder consultations for vulnerability and adaptation baseline construction.

Adaptation measures will be designed in consultation with local and national stakeholders with the use of participatory approach. The results of the project will be use to complement and supplement current policies and measures carried out at local and national levels. The project will also explore synergies with current policies and measures carried out in the context of rural water management, rural development, agricultural strategy, poverty reduction strategy and public health.

Table 1: logical framework matrix

Project Description	Indicators	Means of Verification	Assumptions
<p>GOAL Assessment of the capacity of adaptation to climate change impact at community level (Rufiji Area),</p>	<p>Awareness of the community on adaptation to climate change impact</p> <p>End of Project Report</p>	<p>Sample survey of people in the village who understand adaptation to climate change impact</p>	<p>Stakeholders at local level will participate in project implementation</p>
<p>POPURSE To address a range of low cost, technically uncomplicated, accessible adaptations that exist for use at local level that can allow adaptation to effects of climate change on food security, rural water supply, health, with the integration of poverty and gender issues.</p>	<p>Comprehensive document of low cost, technically uncomplicated adaptation options has been prepared</p>	<p>Comprehensive adaptation report</p>	<p>The project team will be able to identify all suitable at local level adaptation options in food security, rural water supply and health</p>
<p>OBJECTIVE 1: To evaluate current vulnerability and adaptation to climate change at community level through integrative and participatory approaches</p>	<p>A comprehensive and high quality report which reflect a good understanding of the outstanding issues and adaptation capacity at community level in Rufiji areas has been prepared</p>	<p>Vulnerability and Adaptation Assessment Report and Executive Summary</p>	<p>The project team will be able to carry out a high quality report</p>
<p>RESULT 1.1 Information of local adaptation and livelihoods systems, human health, rural water supply and food security and ecosystem features consolidated</p>	<p>A comprehensive and sufficient amount of information has been consolidated, sistematized and disseminated</p>	<p>Documents, Participatory Reports, Documentation materials, Bibliographic sources, Analysis reports, Models</p>	<p>Information available</p>
<p>Activity 1.1.1 Train interviewers and Collecting Information and data</p>	<p>Information has collected with special emphasis on study area climate, ecosystem trends, poverty and social vulnerability indicators, el Niño and disaster records, agriculture practices, local livelihoods, hydrology and human diseases, etc.</p>	<p>Maps, Documents, Row data, Documentation materials, Bibliographic sources, etc.</p>	<p>Information available</p>

Activity 1.1.2 Analysing information and Modelling (S-L Framework)	A comprehensive set of information layers consolidated with special emphasis on: climate change and variability, Land Use Changes, Watershed information, Biotic factors, demographic and human development trends, risk and disaster management, etc. with the assistance of Sustainable Livelihoods Framework Model	Geo Data Base, Analysis reports, Models, etc.	The project has developed a cost-effective S-L Framework tool, which has been used to systematize information and to model principal features of the study area.
Activity 1.1.3 Building research capacity at the national team for integrative and participatory approaches	The national research team is able to carry out integrative and participatory approaches for carrying out the project activities.	Training and materials, photos, power point presentations, etc.	Technical support from international experts can enhance the research capacity of the national team.
Activity 1.1.4 Sistemizing, dissemination and socializing information	The information collected by the project has been sufficiently showed by project participants and beneficiaries	Workshops materials, photos, power point presentations, etc.	Principal stakeholders and beneficiaries will be interested to participate in workshops and forum
RESULT .1.2 Sistemizing of traditional knowledge and local observations about climate change adaptation	Traditional knowledge has been accordingly assess and systematize	Traditional Knowledge Report	Communities and local individuals are willing to share their knowledge and views
Activity 1.2.1 Train interviewers and Collecting information	A consistent set of tools for data collection has been consolidated (e.g., structured questionnaire)	Interviews, knowledge mapping Training report Number of enumerators trained by topic and type of training	Communities and local individuals are willing to share their knowledge, Right methods have been used
Activity 1.2.2 Dissemination of the field collected information	A consistent and comprehensive report of information collected has been elaborated.	Workshop materials, photos, power point presentations, etc.	Principal stakeholders and beneficiaries will be interested to participate in workshops and forum
OBJECTIVE 2: To draft an adaptation strategy and measures for the study area of the	Adaptation measures have been designed in consultation with principal stakeholders and local	Adaptation Measures REPORT and Executive Summary	Stakeholders are willing to cooperate and organize for the implementation and follow up

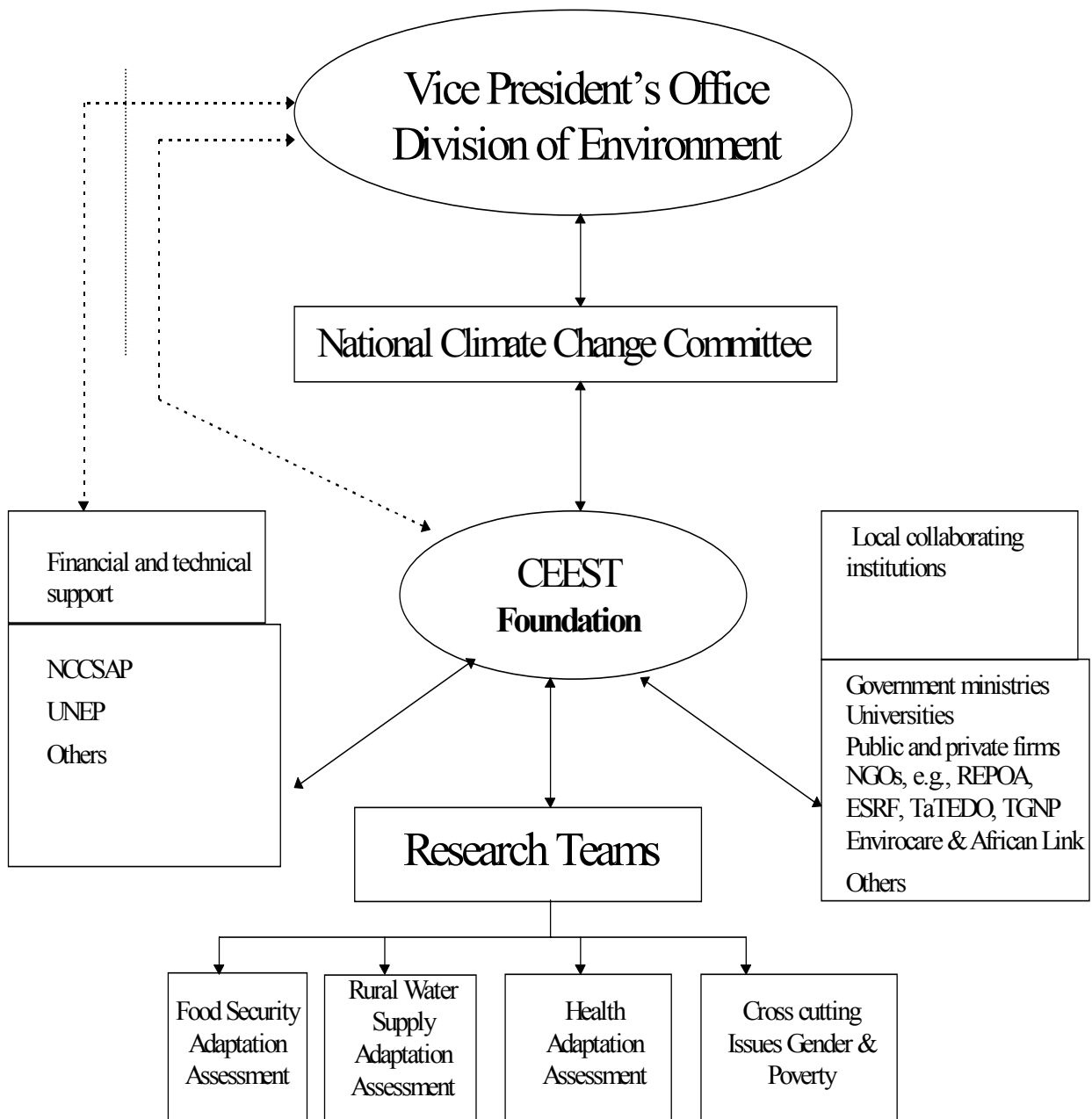
project	communities and resources available, and a comprehensive report has been drafted		of adaptation measures
RESULT 2.1 Awareness of climate change adaptaiton has been raised, NCCSAP II programme explained and synergies explored	NCCSAP II objectives and scope are well known by the key actors and stakeholders	Consultations agenda, reports, decisions, cooperation agreements	Principal stakeholders are willing to cooperate and pursue cooperation agreements
Activity 2.1.1 Showing project scope to principal stakeholders and beneficiaries	NCCSAP II Scope have been showed to principal stakeholders and beneficiaries	Meetings, agenda, reports, decisions, cooperation agreements	Principal stakeholders are willing to cooperate and pursue cooperation agreements
RESULT 2.2 Principal adaptation policies and measures have been designed	A consistent and comprehensive set of climate change adaptation measures have been designed for food security and human health	Design of adaptation measures, means of implementation, cooperation agreements	Principal actors and stakeholders know the proposal and agreed with the designed measures
Activity 2.2.1 Participatory assessment and planning of adaptatoin measures	A group of ideas and means of implementation have been identified and prioritize by stakeholders and beneficiaries	Workshop materials, documentation materials, agreements with local shareholders	Participatory tools are a good tool for detecting adaptation measures and reach agreement
Activity 2.2.2 Systematizing participatory assessments and drawing conclusions	Adaptation measures have been identified and prepared in a consistent way for implementation	Logic framework of adaptation measures, budget, institutional agreements	Adaptation measures can be systematize in a logic framework
OBJECTIVE 3: To evaluate current policies and measures to reduce vulnerability and enhance adaptive capacity of food systems rural water supply and human health at local and national level and draw up recommendations for policy making	A consistent, comprehensive and high quality report of policies and measures has been drafted	Policies and Measures REPORT and Executive Summary	The country has some policies and measures in relation with climate change adaptation in place

RESULT 3.1 Climate change adaptation integrated into sensitive governmental programs of risk mitigation, food security, rural water supply, public health and poverty reduction	A consistent set of policies and measures recommendations have been drafted and consulted with principal stakeholders and decision makers	Policies and measures draft, meetings memoirs, decisions and cooperation agreements	Stakeholders and decision makers are willing to share their views and discuss policy making
Activity 3.1.1 Stakeholder consultations about policies and measures to be carried out.	Sufficient consultation with key stakeholders have been carried out	Meetings memoirs, decisions and cooperation agreements	Stakeholders and decision makers are willing to share their views and discuss policy making
Activity 3.1.2 Preparation of a Set of recommendations to integrate climate change adaptation in national policies	A consistent set of policy recommendations and strategies have been drafted	Set of recommendations incorporated in PRSP etc	A set of policy recommendations can enhance country climate change policy
WORK PLAN	A complete work plan for the 18 months of the project has been prepared	Project information, Logic Framework, Methodologies, Staffing Plan, List of Deadlines for Deliverables, Detailed budget.	The Work Plan will organize project activities, staff and resources
REPORTS	Technical and financial reports for project progress follow up have been every six months prepared and presented	Written progress reports	Progress results will serve for follow up and reorganization of project activities

Project Stakeholders Analysis

This section give an outline on an analysis of the institutions and stakeholders that will be involved in the project, a description of the activities that will be undertaken by each of these, and an explanation of how institutional cooperation and stakeholder involvement will be coordinated.

This project enjoys a very high level of government support and a wide range of national support. It will be executed by the CEEST supported by other relevant ministries and the National Climate change Committee (NCCC), which has broad representation from both the public and private sectors, including experts from universities and NGOs. This proposal is fully endorsed by the national GEF Operational Focal Point.



Project Management (NCCSAP National Coordinator) would be through CEEST (Technical Secretariat for the Climate Change Steering Committee (NCCC), answering to the Vice President's Office). The environmental focal point in the VP's office has a counterpart there in the VP's office responsible for the PRSP. Therefore, there are excellent channels of two-way communication that will ensure that the PRSP-focused studies under NCCSAP are most helpful in informing policy. Therefore, the results of the NCCSAP will be good in building the climate change issues in PRSP process

Tanzania Gender Networking Programme (TGNP) has been operational since 1993 as a registered non-governmental organization. During this period the NGO has built itself into an effective pressure group which promotes gender positive activism.

The TGNP in the NCCSAP will be very much interested in the programme specially the gender aspects but generally on how rural societies adjust to short term climate changes and how these reactions can provide insights into the longer term climatic changes taking on board women who are mostly affected by the impact due to nature of workload to them in our societies.

ENVIROCARE is a non-profit making non-governmental organisation (NGO). It is a local organisation with activities in various geographical areas in Tanzania linking the national and grass -root level. ENVIROCARE believes that, there is a close link between human rights abuse, environmental degradation and poverty.

The two above mentioned Project Team stakeholders are those that have considerable experience in mounting Kiswahili informational campaigns (i.e., Envirocare and TGNP), and they also have good relations with such organizations as the Tanzanian Women Journalists Association – TAMWA).

The Economic and Social Research Foundation (ESRF) an independent, not-for-profit institution for research and policy analysis.

ESRF is one of the technical team for the PRSP in the country undertaking research of Growth and Poverty initiatives at grass-roots level, to monitor how development in the economy and public policy impinge on poor households, and more macroeconomic level and analyse the constraints on growth and the impact of growth on differing sectors and social groups. Therefore, ESRF will facilitate the channeling of the NCCSAP findings into the PRSP process.

The Tanzania Traditional Energy Development and Environment Organisation (TaTEDO) is a Non-Government Organisation based in Dar es salaam, Tanzania with expertise in renewable/ rural energy and related environmental issues. TaTEDO's vision is communities with better access to sustainable and improved energy services for poverty reduction, economic growth and social development while conserving the environment. TaTEDO has a close relationship with with Rufiji and also has some on going ground activities in Rufiji which will be the entry point for the NCCSAP.

Monitoring Indicators

Project Management Indicator:	Means of Verification
1. The counterpart has coordinated activities effectively and executing agencies (government agencies/universities/NGOs) have carried out their tasks professionally.	The analysis of the stakeholders, and involvement of the professionals from Vice President's Office, REPOA, UDSM, TaTEDO, Envirocare, African Ling and TGNP
Study Quality Indicator:	
2. The orientation towards adaptation and livelihoods has been realized and there is a credible link between project activities and poverty reduction.	The Output from the analysis of adaptation with the help of livelihood framework model realised and incorporated in PRSP process
In-country coordination Indicators:	
3. The project has coordinated effectively with the NAPA process and/or other relevant on-going and/or planned initiatives.	The ministry and coordinator of the NAPA is also the member of the NCCSAP team in Tanzania. Also some of the information from NAPA and NCCSAP used interchangeably from each other
4. Key stakeholders (including NGOs and/or CBOs) have effectively provided input and feedback in project activities.	Inputs from Vice President's Office, Rufiji District officials, ESRF, REPOA, TGNP and Envirocare used to implement the NCCSAP project in Tanzania
Policy Influence Indicators:	
5. Project activities have influenced the country's poverty reduction strategy paper (PRSP), or equivalent.	NCCSAP Outputs and other Information incorporated in the PRSP document, and some of project stakeholders are member of the PRSP team
6. The project has contributed data and/or analysis to the country's National Communication.	Data and other information from NCCSAP used in the preparation of the second national communication
7. The project has facilitated NGO/CBO involvement in the preparation of the country's National Communication.	The participation of the TaTEDO and other CBOs from Rufiji district realised
8. Awareness of policy makers in key ministries has been raised.	Seminars reports and involvement of policy makers from the project inception to the implementation stage
9. Opportunities for south-south cooperation (where applicable) have been utilised.	Visit to Mozambique for exchange of experience